

# Nero D



The Nero D is part of the Nero family. The downlight offers a wide uniform light distribution whilst keeping a minimalist architectural appearance.

This luminaire is constructed from two die-cast parts - the heatsink and bezel. These components are held together at the point of articulation for ease of maintenance.

## Product

|        |       |
|--------|-------|
| Nero D | NER/D |
|--------|-------|

## Lumen Output

|        |       |
|--------|-------|
| 1511lm | /1511 |
| 2014lm | /2014 |

## Colour Temperature

|       |     |
|-------|-----|
| 3000K | /3K |
| 4000K | /4K |
| 6500K | /6K |

## Beam Angle

|          |     |
|----------|-----|
| 75° Beam | /75 |
|----------|-----|

## Standard Colours\*

|   |         |
|---|---------|
| White   | RAL9016 |
| White   | RAL9010 |
| Black   | RAL9005 |
| *Other colours available upon special request |         |

## Mounting

|                             |  |
|-----------------------------|--|
| Recessed mounted as default |  |
|-----------------------------|--|

## Dimming

|                         |     |
|-------------------------|-----|
| Fixed output as default |     |
| DALI dimming            | -DA |
| Switch dim/Touch dim    | -SD |
| Mains dimming           | -MD |
| Casambi                 | -CA |

## Emergency

|   |     |
|---|-----|
| No emergency facility as default                  |     |
| 3 hour internal pack                              | -E1 |
| 3 hour internal pack with self-test function      | -E2 |
| 3 hour integral pack with DALI reporting function | -E3 |

## Lighting Data

| Lumen Output   | Wattage | lm/cW |
|----------------|---------|-------|
| 1511lm (4000K) | 15.1W   | 100.1 |
| 2014lm (4000K) | 20.1W   | 100.2 |

|                     |                         |
|---------------------|-------------------------|
| CCT                 | 3000K<br>4000K<br>6500K |
| Light Source        | LED CREE                |
| SDCM                | 3                       |
| Longevity (L70/B10) | 60,000 Hours            |
| Colour Rendering    | RA>82                   |
| UGR                 | <19.0                   |

## Technical Data

|                        |                   |
|------------------------|-------------------|
| IP Rating              | IP54              |
| Construction           | Diecast Aluminium |
| RAL colour (standard)  | 9016<br>9010      |
| Mounting Method        | Recessed          |
| Protective class       | SELV              |
| Impact Resistance (IK) | IK07              |
| Warranty               | 5 Years           |
| Certification          | UKCA, CE, ROHS    |

## Electrical Data

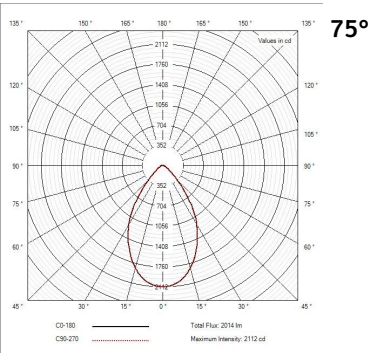
|                                  |            |
|----------------------------------|------------|
| Rated Supply Voltage             | 220–240 V  |
| AC Voltage Range                 | 198–264 V  |
| Mains Frequency                  | 50/60 Hz   |
| Output LF Current Ripple @ 120Hz | <1%        |
| Overvoltage Protection           | 320 V      |
| In-rush Current                  | 2.5 A      |
| THD                              | <10%       |
| Power Factor                     | 89%        |
| Parasitic Load                   | 2.1W       |
| Operating Temperature            | -25 +60 °C |

## Emergency Data

| BLF | Lumen Output |
|-----|--------------|
| 20% | 280lm        |
| 14% | 280lm        |

|                       |                                  |
|-----------------------|----------------------------------|
| Emergency Duration    | 3 Hours                          |
| Recharge Period       | 24 Hours                         |
| Battery Type          | LiFePO4 (Lithium Iron Phosphate) |
| Battery Pack          | 3 x 3.2V 1.5Ah                   |
| Parasitic Load        | 1.2W                             |
| Operating Temperature | 0–60 °C                          |
| Power Efficiency      | 95%                              |
| Certification         | CE, ROHS                         |

## Standard Photometry



## Dimensions

|            |              |
|------------|--------------|
| Cutout     | Ø110mm       |
| Dimensions | Ø126 x 133mm |
| Weight     | 2.8 kg       |



Tel: 01489 878 406 Email: [Info@bumblebee-lighting.co.uk](mailto:Info@bumblebee-lighting.co.uk) Web: [bumblebee-lighting.co.uk](http://bumblebee-lighting.co.uk)

Bumblebee, Unit 16 Business Park, Park Lane, Upper Swanmore, Southampton, SO32 2QQ Company No: 10464972 VAT No: 254 3859 81

BumbleBee

