

Jaguar Wall



Please read these instructions carefully before commencing installation and retain for future reference. If in doubt, we advise that you consult a qualified electrician to install the product. These products must not be modified, if modification is made or product is not installed with these installation instructions it will invalidate the warranty and may render the product

Warning

1. For indoor use only.
2. If cable is defective, do not use or exchange the cable.
3. The light source of this luminaire is replaceable by the Manufacturer or approved agent.
4. We do recommend that a qualified electrician should be used to install the product.
5. Install in accordance with IEE Wiring regulations and current Building Regulations.
6. This light fitting should be connected to a fused circuit
7. If replacing an existing fitting, make a careful note of the connections.
8. Waste electrical products should not be disposed of with household waste. Please recycle where facilities exist. Check with your local authority for recycling advice.

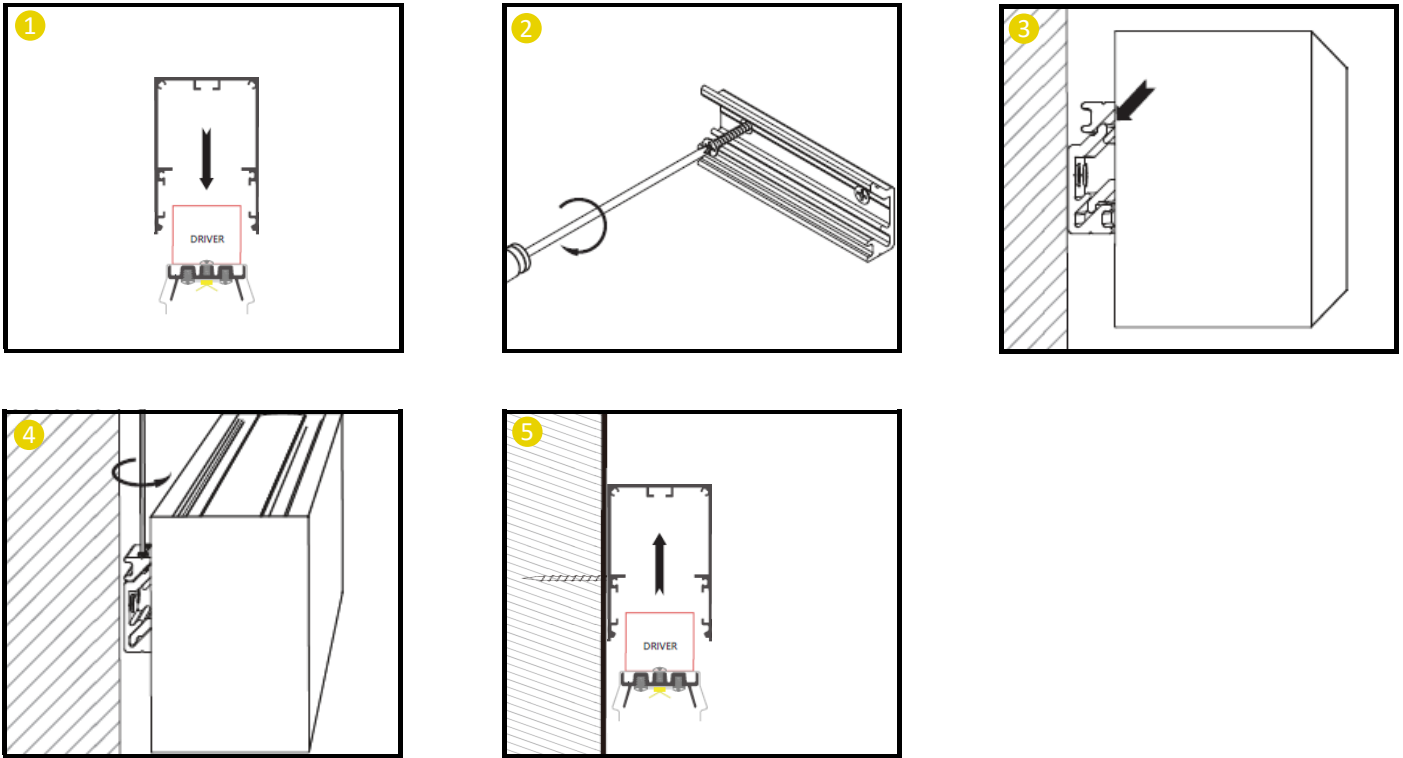
Important safety Notes

1. Switch off the electricity at the mains before commencing installation and remove the appropriate circuit fuse to avoid accidental switching on of the mains supply.
2. Make sure all connections are tight with no loose strands.
3. Ensure fire regulations are not breached when fitting your

Energy Rating

This product contains a light source with an energy rating of **C**

Installation - Wall




1. Remove the diffuser from the Jaguar profile and the internal geartray.
2. Using the Jaguar luminaire as a template, measure the desired fixing centers on the side of the luminaire where the brackets are mounted (centers will vary depending on product length). Mark these dimensions on to the surface desired and use the appropriate fixing for the substrate. Note: typical centers are product length minus 120mm each end.
3. Offer up the luminaire to the wall mounted brackets in a hooking motion, ensuring the luminaire brackets have housed correctly before allowing the brackets to weight bear. Ensure the power flex has fed through the cable entry correctly on the luminaire housing.
4. Using a long shafted hand tool, lock the bracket in place from above.
5. Terminate the geartray to the power flex (see wiring diagram overleaf), replace the geartray and diffuser.

Wiring


Standard

Live
Earth
Neutral




DALI (-DA)

DALI -
DALI +
Live
Earth
Neutral



Standard EM (-E1)

P/Live
Live
Earth
Neutral



DALI EM (-E3)

DALI -
DALI +
P/Live
Live
Earth
Neutral

