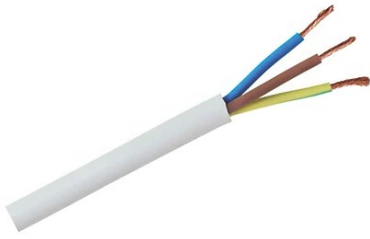


Ceiling Rose Options



The '-S' flex only option is our standard offering for suspended linear profiles where the **driver and emergency kit** are **integral** to the luminaire. The flex is white or black LSFH cable pre-stripped ready for terminal blocks for connection.

Standard offering for: Linears
Compatible with: Linears, Canlights

Notes: Available in 3,4,5 & 6 cores

S - Flex Only

Suspended without Rose	-S
------------------------	----

Standard Colours*

White Flex	
Black Flex	
Other cables available upon special request	



The S1 ceiling rose is our standard offering for suspended Canlights where the **driver and emergency kit** are **integral** to the luminaire. The ceiling rose allows for LSFH cable through a cable gland with terminal blocks for connection.

Standard offering for: Canlights
Compatible with: Linears, Canlights for aesthetic purposes

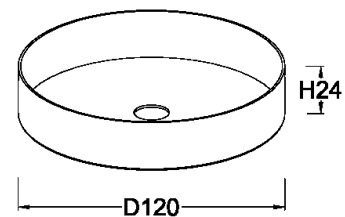
Notes: BESA compatible

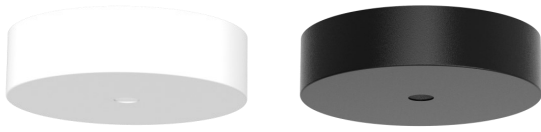
S1 - Ceiling Rose Ø120x24mm

Rose supplied with preconnected flex	-S1
--------------------------------------	-----

Standard Colours*

White	RAL9016
White	RAL9010
Black	RAL9005
*Other colours available upon special request	





The S2 ceiling rose is our standard offering for suspended Canlights where the **driver** is **external** to the luminaire. The ceiling rose allows for LSFH cable through a cable gland with terminal blocks for connection.

Standard offering for: LED only Canlights
Compatible with: Linears, Canlights for aesthetic purposes

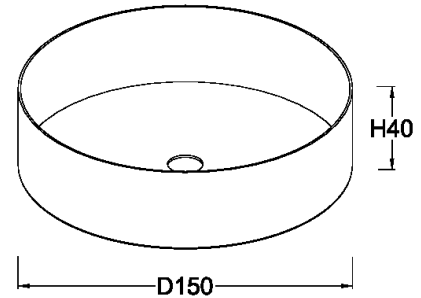
Notes: BESA compatible, not compatible with emergency products

S2 - Ceiling Rose Ø150x40mm

Rose supplied with preconnected flex	-S2
--------------------------------------	-----

Standard Colours*

White	RAL9016
White	RAL9010
Black	RAL9005
*Other colours available upon special request	



The S3 ceiling rose is our standard offering for suspended Canlights where the **driver and emergency kit** are **external** to the luminaire. The ceiling rose allows for LSFH cable through a cable gland with terminal blocks for connection.

Standard offering for: LED only Canlights
Compatible with: Linears, Canlights for aesthetic purposes

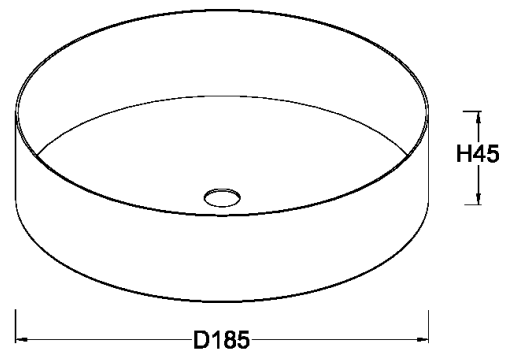
Notes: BESA compatible

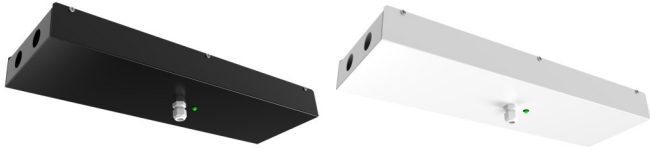
S3 - Ceiling Rose Ø185x45mm

Rose supplied with preconnected flex	-S3
--------------------------------------	-----

Standard Colours*

White	RAL9016
White	RAL9010
Black	RAL9005
*Other colours available upon special request	





The S4 ceiling rose is our standard offering for suspended linear lights where the **driver and/or emergency kit** are **external** to the luminaire. The ceiling rose allows for 20mm Conduit or LSFH flex through cable glands with terminal blocks for connection.

Standard offering for: LED only Linears
Compatible with: Linears, Canlights for aesthetic purposes

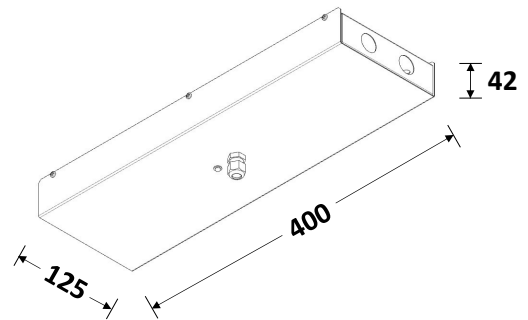
Notes: BESA 20mm trunking compatible

S4 - Ceiling Rose 400x125x42mm

Rose supplied with preconnected flex	-S4
--------------------------------------	-----

Standard Colours*

White	RAL9016
White	RAL9010
Black	RAL9005
*Other colours available upon special request	



The '-S5' flex and remote driver option is our standard offering for LED tape based linear profiles where the **driver and/or emergency kit** are **external** to the luminaire. The flex is white or black low voltage cable pre-stripped ready for driver connection.

Standard offering for: LED Tape based products
Compatible with: Linears

Notes: Double Insulated (Class II)

S5 - Remote Driver

Flex supplied with remote driver	-S5
----------------------------------	-----